

11 old photos of Holmedale

(Gilling West, Ravensworth, Kirby Hill, Barningham, Scargill)

7th September 2017

By Chris Lloyd



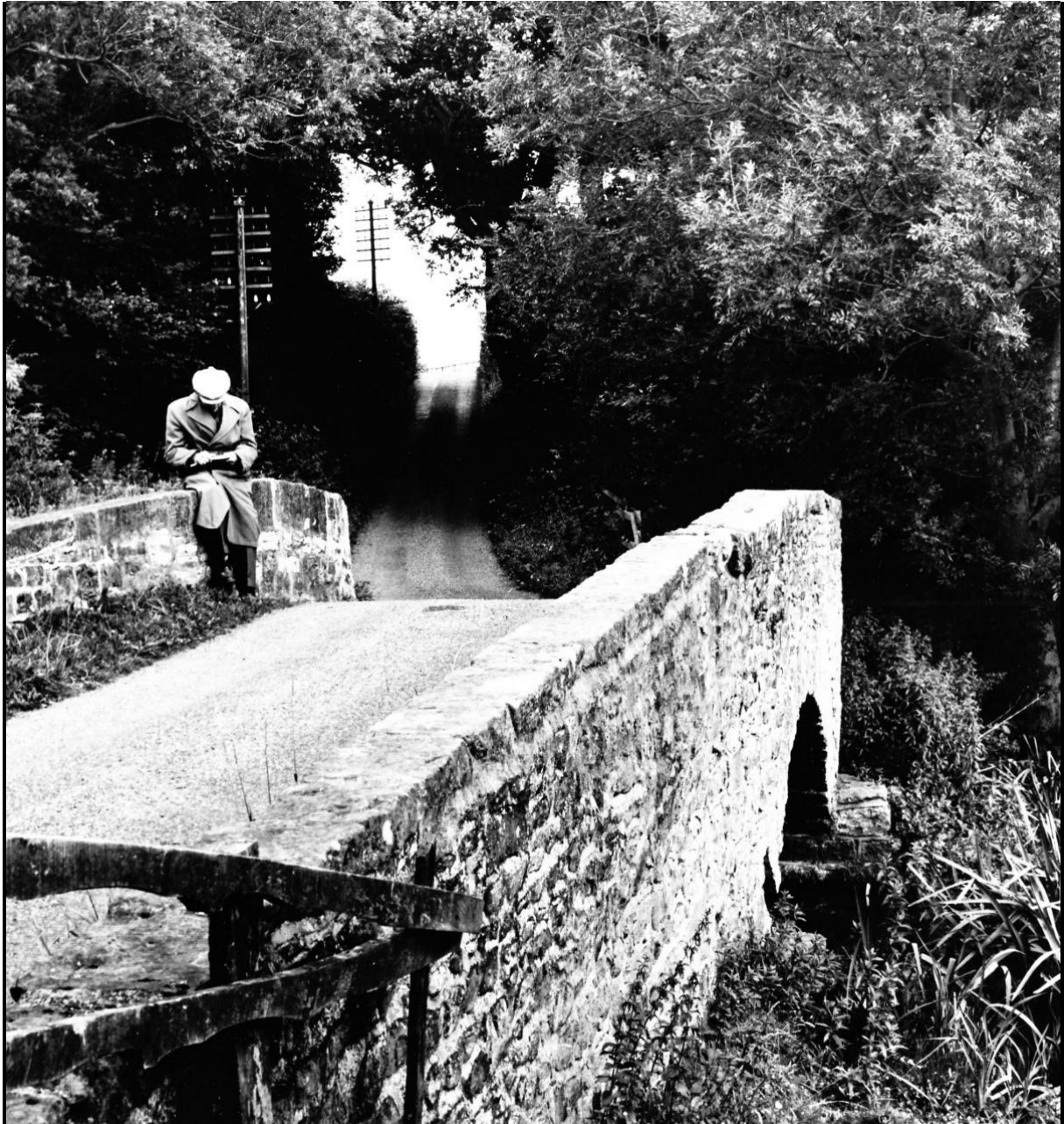
Gilling West

SQUEEZED between Swaledale and Teesdale is a largely over-looked dale: Holmedale, with Gilling West at its head and Holme Beck running along its floor, creating the marshland in which Ravensworth Castle sits.

On Holmedale's northern bank is the A66.

On its southern side are the villages of Whashton, Kirby Hill, Gayles and Dalton.

By the time we get as far west as Newsham, Barningham and Scargill, we've probably climbed so high that we've left Holmedale behind and entered into the Yorkshire part of Teesdale – but, to break a few geographical boundaries and to make our trip worthwhile, we've included them in this selection of photographs from The Northern Echo's archive.



Bridge on Comfort Lane between Whashton and Gilling West

VIEW FROM A BRIDGE: A rural scene near Gilling West. This chap could be studying the satnav on his tablet computer, only the picture was taken in 1962



Kirby Hill

TOP OF THE WORLD: A splendid picture of Kirby Hill March 1958 when a Rogation Service – a special feast – was held



Gayles

UP AND DOWN: Gayles is a village of three stone streets which run quite steeply up the side of the dale. The streets are called East, Middle and West, and this is one of them, in June 1986



Dalton

SNOW TIME: The Traveller's Rest at Dalton in November 1965 when some fortunate people had been snowed into them pub



Ravensworth

Rough and tumble on the roughly cut grass in the centre of Ravensworth, with the Church of St Peter and St Felix at Kirby Hill in the distance. This picture was taken in January 1961 – who can tell us about the stones in the middle of the green?



Ravensworth

The wide green of Ravensworth is one of its main features. This picture is from June 1961. We'd be delighted to receive identifications of the two cars parked on the roads



Barningham

VILLAGE VIEW: Barningham, from the west end, in February 1967



Ravensworth

A very boring picture until you know that on the rear someone has written "Ravensworth: 17th Century cruckhouse". Crucks were crooked timbers that were used to create a frame for the roof to rest on. This picture was taken in June 1977 - did it survive



Barningham

MOOR MONUMENT: Just outside Barningham is this curiosity with details carved on it. More details in the article.

MOOR MONUMENT: Just outside Barningham is this curiosity with details carved on it. The obelisk says: "At this stand (Carbus) were shot 190 grouse at a single drive lasting twenty-five minutes by Sir Frederick Milbank Bart. MP on the 20th August 1872 at which time Joseph Collinson was head keeper. Erected by Lady Milbank in commemoration 1892."

And the base says: "Total bag, August 20th 1872 2,070 grouse (six shooters). Total killed in the season 17,064 grouse on Wemmergill Moor."

Wemmergill Moor is near Middleton-in-Teesdale, but another stone nearby explains: "This memorial was removed from Wemmergill Moor to this site after Sir Frederick Milbank came into possession of Barningham Moor."



Scargill

DUAL USE: This single room school was built for £208 8s 7d at Scargill in 1874. The school closed in 1950 but continued in use as a church